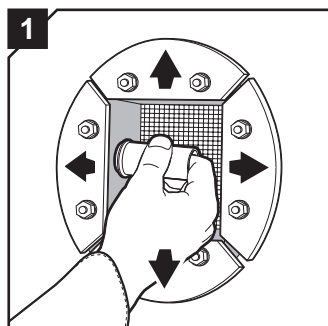
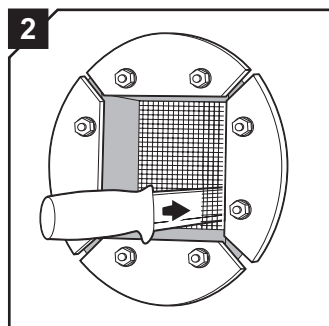


Инструкции по монтажу муфты R

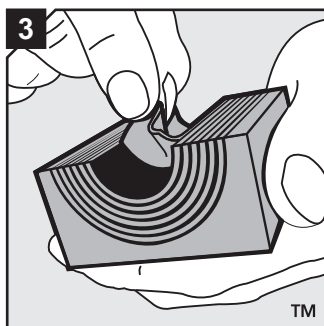
Монтаж



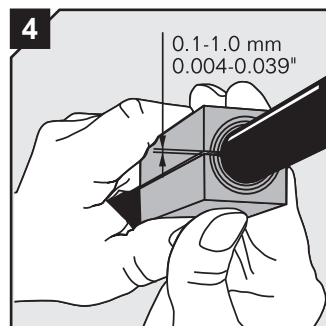
Слегка смажьте муфту снаружи и обильно внутри, особенно с углах, используя Roxtec Lubricant. Очистите от загрязнений гильзу/ монтажное отверстие. Отодвиньте в стороны наружные накладки муфты.



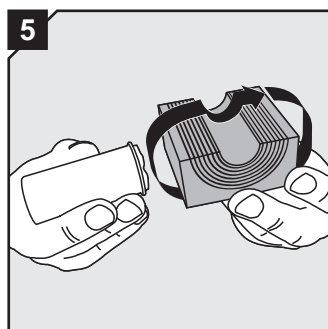
Разрежьте сетку ножом или проткните пальцами, чтобы проложить кабели/трубы.



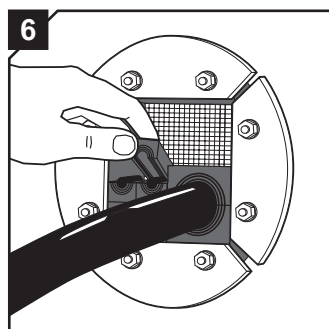
Подгоните внутренний диаметр модулей под диаметр уплотняемых кабелей или труб, удаляя слои резины.



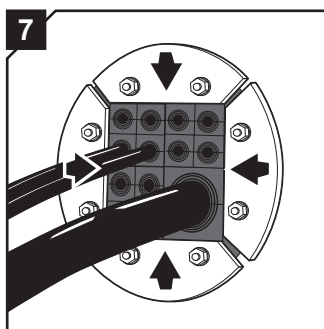
Добейтесь зазора 0,1-1 мм между половинами модуля, сжав ими кабель/трубу.



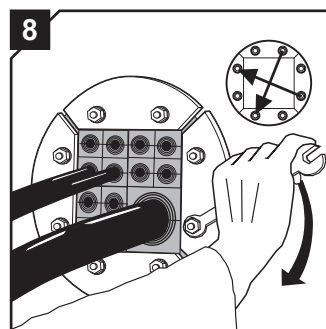
Тщательно смажьте все модули как изнутри, так и снаружи.



Вставьте модули в муфту согласно плану размещения.



Сдвиньте наружные накладки муфты к центру (в исходное положение).

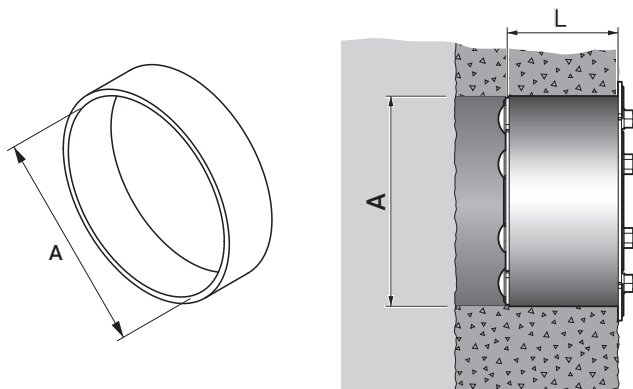


Закрутите гайки равномерно, в перекрестном порядке. Муфта будет сдавливаться до полного уплотнения.

Данные продукта

Муфта	Размеры отверстия Ø (мм) (A)	Минимальный габарит по глубине (L)	Зона уплотнения	Максимальный момент затяжки (Н.м)
R 70	70-71	75	40 x 40	6-7
R 75	75-76	75	40 x 40	6-7
R 100	100-102	80	60 x 60	6-7
R 125	125-127	75	80 x 80	6-7
R 127	127-129	75	80 x 80	9-11
R 150	150-152	75	90 x 90	9-11
R 200	200-202	75	120 x 120	9-11

*Момент затяжки зависит от нескольких факторов, например, диаметра кабеля или трубы, количества нанесенной смазки, диаметра гильзы или материала оболочки кабеля и т.д.



Демонтаж

Выполняется в обратном порядке.

Примечания

- Завершив монтаж, не подвергайте кабели или трубы натяжению или давлению в течение, как минимум, 24 часов.
- Кабели проходят прямо через раму.

DISCLAIMER

"The Roxtec cable entry sealing system ("the Roxtec system") is a modular-based system of sealing products consisting of different components. Each and every one of the components is necessary for the best performance of the Roxtec system. The Roxtec system has been certified to resist a number of different hazards. Any such certification, and the ability of the Roxtec system to resist such hazards, is dependent on all components that are installed as a part of the Roxtec system. Thus, the certification is not valid and does not apply unless all components installed as part of the Roxtec system are manufactured by or under license from Roxtec ("authorized manufacturer"). Roxtec gives no performance guarantee with respect to the Roxtec system, unless (i) all components installed as part of the Roxtec system are manufactured by an authorized manufacturer and (ii) the purchaser is in compliance with (a), and (b), below.

(a) During storage, the Roxtec system or part thereof, shall be kept indoors in its original packaging at room temperature.

(b) Installation shall be carried out in accordance with Roxtec installation instructions in effect from time to time.

The product information provided by Roxtec does not release the purchaser of the Roxtec system, or part thereof, from the obligation to independently determine the suitability of the products for the intended process, installation and/or use.

Roxtec gives no guarantee for the Roxtec system or any part thereof and assumes no liability for any loss or damage whatsoever, whether direct, indirect, consequential, loss of profit or otherwise, occurred or caused by the Roxtec systems or installations containing components not manufactured by an authorized manufacturer and/or occurred or caused by the use of the Roxtec system in a manner or for an application other than for which the Roxtec system was designed or intended.

Roxtec expressly excludes any implied warranties of merchantability and fitness for a particular purpose and all other express or implied representations and warranties provided by statute or common law. User determines suitability of the Roxtec system for intended use and assumes all risk and liability in connection therewith. In no event shall Roxtec be liable for indirect, consequential, punitive, special, exemplary or incidental damages or losses."



Roxtec International AB
 Box 540, 371 23 Karlskrona, SWEDEN
 PHONE +46 455 36 67 00, FAX +46 455 820 12
 EMAIL info@roxtec.com, www.roxtec.com